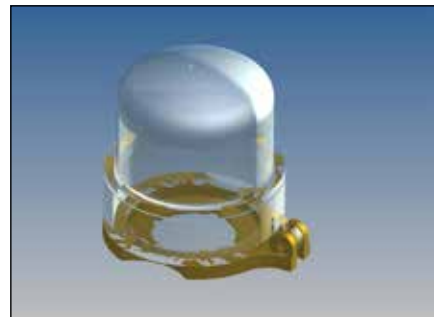


Mounting the Sealing Cover

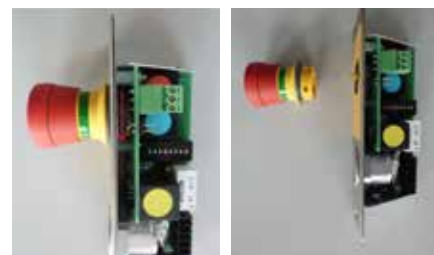
Function

The sealing cover can be attached to every control and operating terminal with an emergency-open switch. It prevents the arbitrary and unauthorised use of the emergency-open switch.



Mounting

Step 1: To remove the emergency-open switch you have to loosen the black ring below the front plate by turning it anticlockwise. Then the emergency-open switch can be taken off.



Step 2: Take off the yellow lower part of the sealing cover.



Step 3: Fit the yellow lower part from below on the emergency-open switch.



Step 4: Fix the emergency-open switch again on the terminal and cover it with the plastic cap.



Step 5: The sealing cover has to be protected against unauthorised use with a lead seal to be provided on site. Now the emergency-open switch is protected.



Measures to be Taken After an Activation

After the emergency-open switch has been activated the lead seal is removed and the plastic cover opened. The switch is unlocked, the cover put back and secured again with a lead seal.