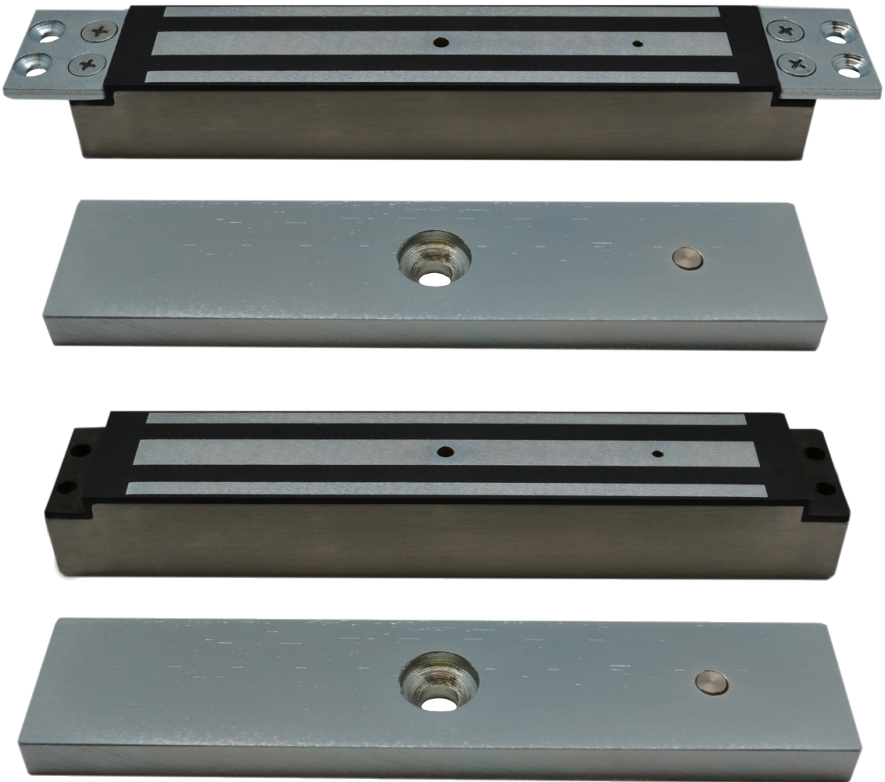


Mounting Instruction

Bar Magnet

Flush Mounting (uP)

FH300U35K, part no. 040284SET



1. TECHNICAL DATA

FH300U35K (Flush mounting)	
Holding force	2000 N
Operation mode	quiescent current (locked with current)
Supply voltage (+/-10 %)	12 / 24 V DC
Power consumption	480 / 240 mA
Hall contact	changeover contact(s) (changeover/NO/NC)
Switching voltage	24 VDC / 2 A
Remanence	0 N
IP rating	IP 54
Operating temperature	-15 to +55 °C
Dimensions (w x h x d)	magnet without mounting plates: 195 x 35.5 x 27 mm magnet with mounting plates: 228 x 35.5 x 27 mm counter plate: 180 x 38 x 11 mm
Gross weight	1.8 kg

2. MOUNTING

1. Determine the position of the bar magnet on the door frame and ensure that the counter plate can be positioned exactly opposite on the door leaf. When the door is closed, the bar magnet and the counter plate must lie opposite each other and touch each other over the entire surface.
2. Insert the bar magnet into the recess on the frame:
 - Vandal-proof mounting with threaded insert (no fixing screw visible)
 - Standard mounting with mounting plates
3. Fix the counter plate on the door leaf.



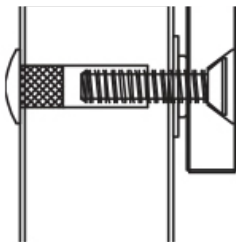
Attention!

The rubber washer and the metal washer must be mounted behind the counter plate and the two locking pins must be used. This allows the counter plate to be moved easily for optimum alignment.

4. Check that the bar magnet and the counter plate as a whole are in good contact over the entire contact surface. Otherwise, the assembly must be corrected so that the two parts are in perfect contact.
5. Turn on the power and check that the system is functioning correctly.

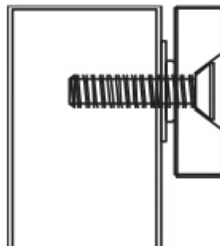
3. FIXING THE COUNTER PLATE

Screwed through



Drill an 8 mm hole through the door. Drill this on the side of the thread insert up to a depth of 35 mm to 12 mm.

Screwed on

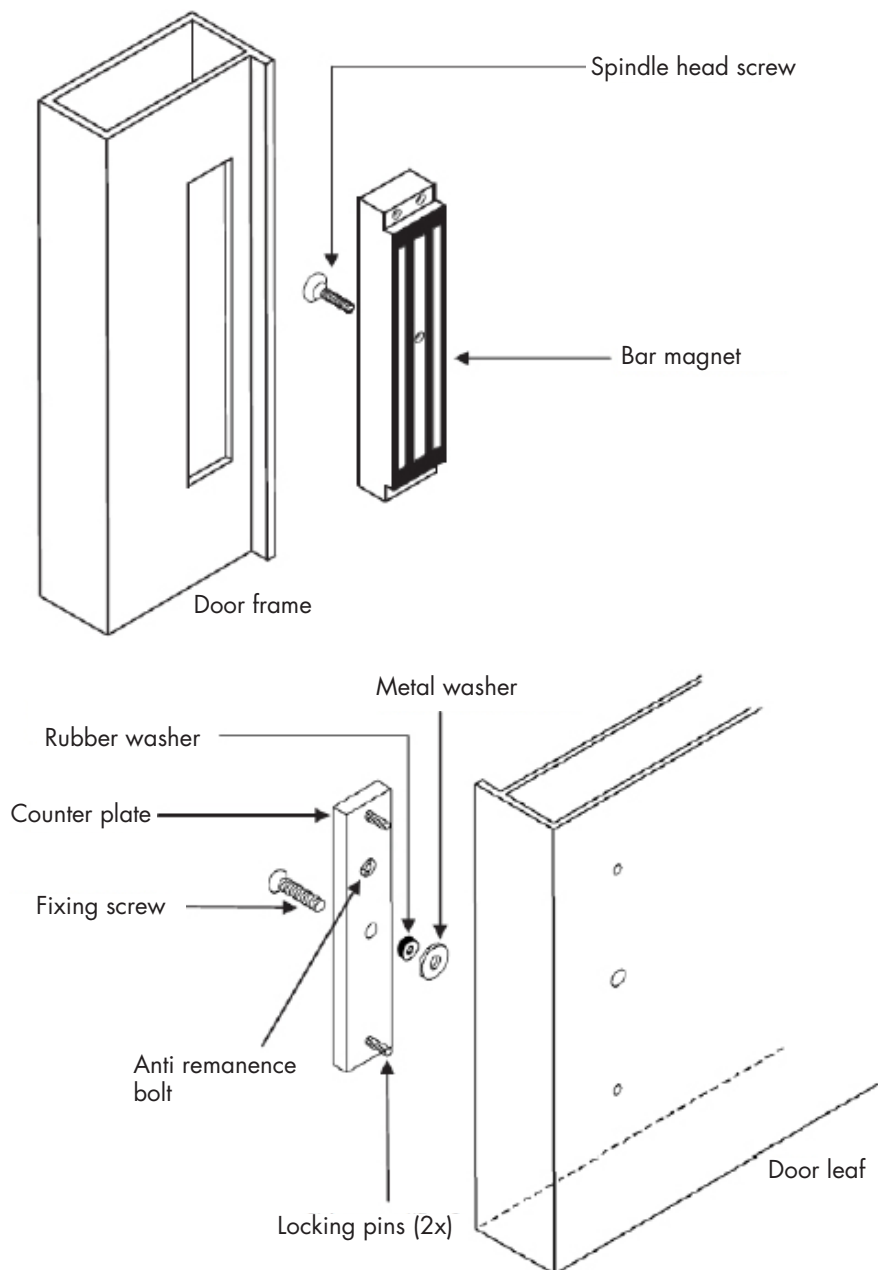


Drill a 6.8 mm hole on the side of the counter plate. Cut a M8 x 1.25 female thread.



It is imperative to use the rubber washer, the metal washer and the two pins on the back of the counter plate. For optimum alignment it should still be possible to easily move the counter plate.

4. ASSEMBLY DRAWING



5. ELECTRICAL CONNECTION

IMPORTANT: When using the magnets with the DICTATOR interlock control system, the supply voltage must always be set to 24 VDC - see illustration on the right!!!

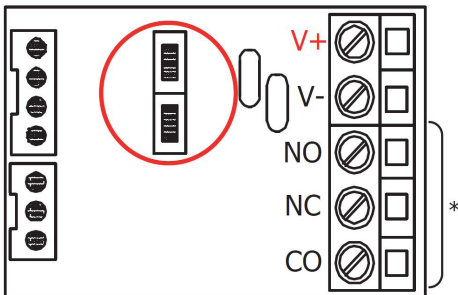


Attention !

Check the correct setting of the jumpers before connecting the magnet to the power supply! Incorrect connection, operating voltage or jumper setting will void the warranty! Damage to the magnet that cannot be repaired may occur.

12 VDC

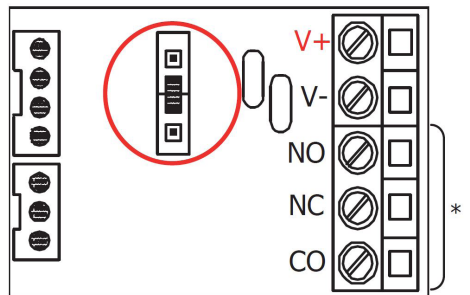
Both jumpers are used:



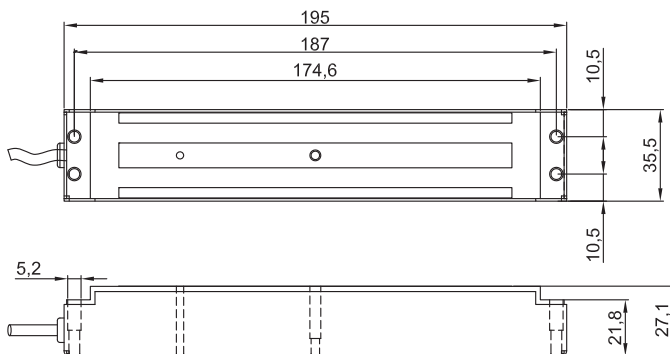
*Hall sensor

24 VDC

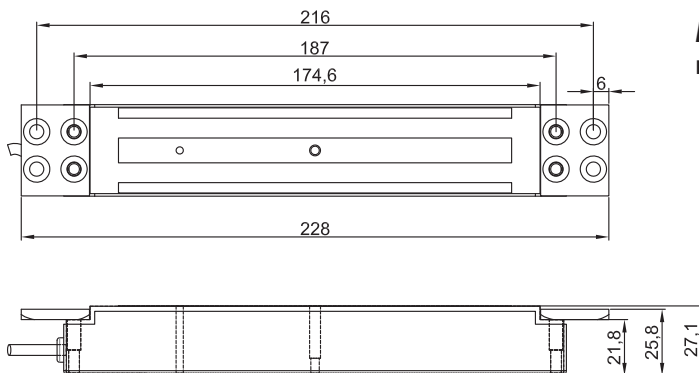
A single jumper in the middle:



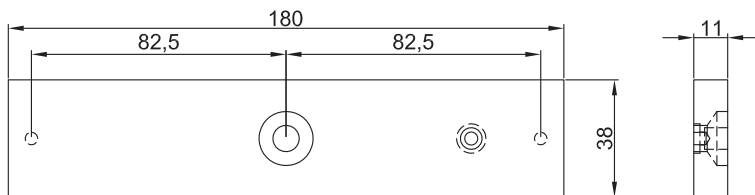
6. DIMENSIONS



Magnet without mounting plates



Magnet with mounting plates



Counter plate

The installation, connection and commissioning of the magnet may only be carried out by a qualified electrician. If you have any doubts about the use or operation, please contact the Technical Customer Service Department of DICTATOR.