

DOOR CLOSING SOLUTIONS

DICTATOR



DOOR CLOSING SOLUTIONS

RELIABLE MECHANICAL SOLUTIONS FOR CLOSING
AND DAMPING DOOR MOVEMENTS

PRODUCT OVERVIEW DOOR CLOSING SOLUTIONS

DOOR DAMPERS

Door dampers put an end to slamming doors. They pull doors shut gently and reliably, and keep them securely closed.



DOOR CLOSERS FOR SLIDING DOORS

The mechanical solution to close sliding doors automatically. The door closer can be installed on a wide range of rail systems and has adjustable closing speed.



BACK CHECKS

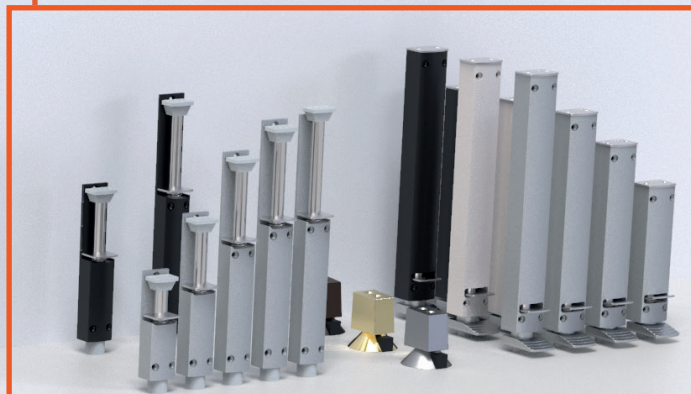
For doors and windows that slam open by wind or by careless use and crash into walls, facades, or even injure passers-by. Models with/without hold-open for a wide variety of installation situations, e.g. doors with overhead door closers.

DOOR CLOSERS FOR HINGED DOORS

Popular problem solvers for interior and exterior doors. A variety of types offer solutions for a wide range of applications.

DOOR HOLDERS

Hold doors open in any position. Ideal for outdoor use or in humid environments, as they are made entirely of non-rusting material.



SWING DOOR HINGES

Ensure safe and controlled closing for large and small swing doors. After a brief swing, the door immediately closes again, which helps to minimize the often irritating noise.

DOOR DAMPERS

THE SOLUTION FOR SLAMMING DOORS

Door dampers slow slamming doors down, pull them shut gently and reliably, and keep them securely closed.



No more noise from slamming doors



Pull doors shut and keep them closed



No energy loss due to open doors



Prevent damage to doors and hardware



Highest quality made in the Netherlands ensures long operating life and perfect function

CHARACTERISTICS

- For doors up to 200 kg, depending on the application
- Closing force between 20 and 115 N, depending on model and type
- Wide range of finishes: chromium plated, satin chromed, stainless steel or painted in RAL colors (depending on model)
- Models for both hinged and sliding doors (using a mounting bracket)
- Suitable for almost any door thanks to different hooks
- Can also be used on fire doors (certain door types)

MODELS

Standard models for hinged doors



VS 2000

Sleek & robust design



V 1600

Versatile model with encased cylinder



R 1400

For installation on the pull side of the door



Z 1000

Base model with exposed cylinder

Special models for hinged doors



H 1300

With reinforced joint for heavy-duty doors



Junior

Small-size model for very small doors

Models for sliding doors



Z 1100

Base model for sliding doors



V 1600

With encased cylinder and mounting bracket for sliding doors



You can find more information on our door dampers at www.dictator.com > Door closing solutions > Door dampers



Video



APPLICATION EXAMPLES: DOOR DAMPERS



THE PROBLEM OF SLAMMING DOORS SOLVED WITH DICTATOR DOOR DAMPERS

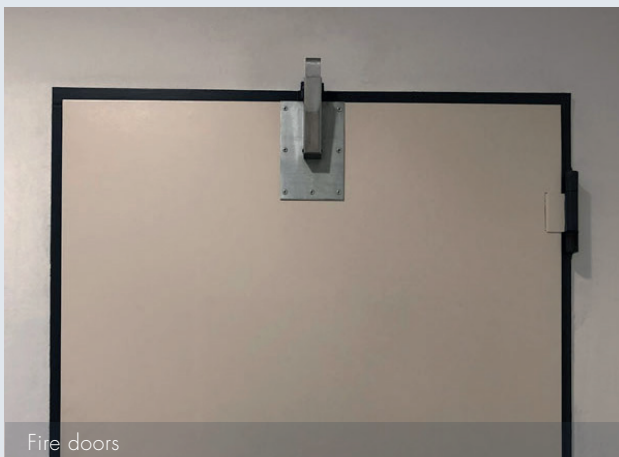
Many entrance doors, especially if they have an overhead door closer, slam shut quite violently and with a loud bang.

Others do not close completely (even if they do have an door closer), and remain open a little, which can be a security hazard.

DICTATOR door dampers put an end to the problem in a very simple but reliable way

They catch the closing doors just before it fully closes, pull them gently shut and keep them securely closed.

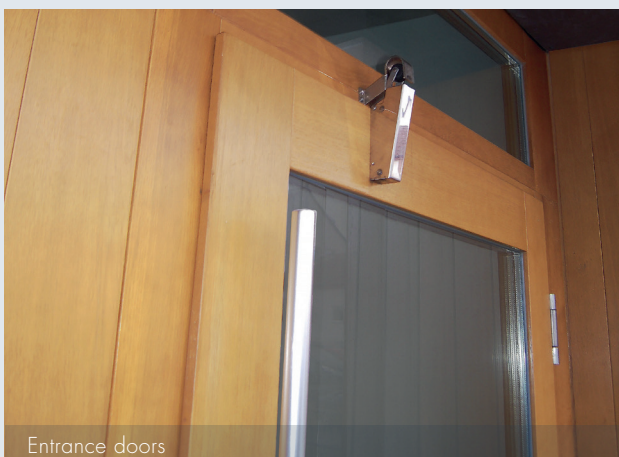
APPLICATION AREAS



Fire doors



Cold storage room doors



Entrance doors



Hotel doors

GATE CLOSER DIREKT

CLOSES DOORS/GATES COMFORTABLY,
SECURELY & RELIABLY

Open gates are a thing of the past! Its adjustable closing speed and closing without final impact reliably prevent injuries caused by doors and gates that slam shut.



Especially for outdoor doors/gates



Easy installation –
even when retrofitting



No final impact



Adjustable closing speed



Long service life even with
frequent operation

CHARACTERISTICS

- Closing speed continuously adjustable
- Can be used as standard on door leaves up to 1500 mm wide and 100 kg (in many cases, larger and/or heavier gates also possible)
- Models with different stroke lengths and closing forces for different door sizes / weights and installation situations
- Different colors/surfaces/materials: gray, anthracite, white and stainless steel
- Many different installation options thanks to variable fixing accessories

MODELS

We offer models with different stroke lengths and closing forces to suit different door sizes, weights and installation conditions:

- **150 mm stroke:** used in most cases
- **200 mm stroke:** for wider doors and unfavorable hinge and post positions
- Model with angle joint on both sides for doors/gates with ascending hinges



DIREKT 150/200



DIREKT for gates
with ascending hinges



You can find more information on our door closers for hinged doors at
www.dictator.com > Door closing solutions > Door closers for hinged doors



Video



APPLICATION EXAMPLES: GATE CLOSER DIREKT

SECURELY CLOSED ACCESS GATES IN A DAYCARE CENTER

The access gates must always be reliably closed to prevent children from running onto the street

This daycare center was looking for a solution to keep their access gates closed so that children could not run onto the street. In the past, a note used to ask users to close the gate behind them—which was not very effective.

The note saying „Please close the gate!“ is no longer necessary thanks to the newly installed DIREKT

Now the gate closer DIREKT has taken over this task and closes the door automatically after each opening, without risk of injury from a slamming gate, as the closing speed can be set and adjusted exactly for the application.



APPLICATION AREAS



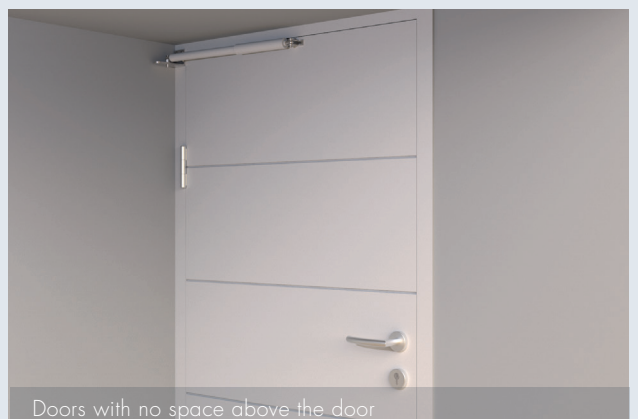
Garden gates & wickets



Gates with ascending hinges



Arched doors



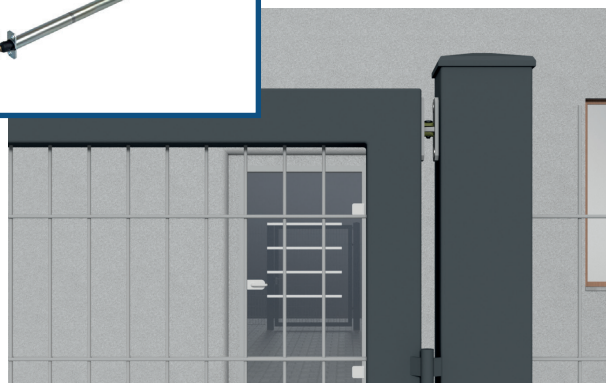
Doors with no space above the door

OTHER DOOR CLOSERS FOR HINGED DOORS

TUBE DOOR CLOSER RTS

The invisible door closer, especially for outdoor gates

- Widely used for outdoor gates (e.g. garden gates or access gates to factory premises)
- Ideal for perimeter security, as it is practically invisible and ensures that access gates are always reliably closed
- Its concealed installation protects the RTS from the effects of weather and makes it largely vandal-proof



FLOOR SPRING WAB 180

For particularly heavy doors up to 600 kg

- Trusted for many decades—especially in use on heavy entrance doors e.g. of churches, museums, official buildings, etc.
- Flawless function even with very frequent operation and at varying temperatures
- Closing speed infinitely adjustable
- Various accessories available, e.g. different cover plates as well as bearing levers and pivot hinges for different doors



CLOSING SPRINGS

Simplest form of door closer

- Close doors with adjustable spring force but without damping
- Depending on the model, they are either installed on the door or built into it so that they are largely invisible
- Are often used in combination with DICTATOR door dampers, which ensure that the door does not slam shut



You can find more information on our door closers for hinged doors at www.dictator.com > Door closing solutions > Door closers for hinged doors



APPLICATION EXAMPLES: DOOR CLOSERS FOR HINGED DOORS



SECURELY CLOSED GATE SYSTEM IN THE COURTYARD OF AN APARTMENT BUILDING

The customer's request: a concealed door closer

The hinged gate in the inner courtyard had to always close on its own. But the door closer should not be visible, because vandalism or accidental damage to the door closer could prevent it from working properly—and also possibly lead to recurring repair costs.

The built-in door closer automatically closes the access gate—without being noticed

The door closer is practically invisible from the outside and sits in the profile of the hinged gate's frame. Only when the door is open can you see part of the hinge and the fixing plates at the bottom. When closed, the door closer is virtually invisible.

FLOOR SPRING WAB 180 IN USE ON HEAVY DOORS

The floor spring WAB 180 with its extremely high load capacity and force closes the doors safely and reliably - and almost invisibly

The floor spring on a 160 kg pivoting door at Haarlemmermeer Crematorium near Amsterdam. It closes the large doors (approx. 2700 x 2200 mm and 160 kg) safely and reliably, even when used frequently and in the event of temperature fluctuations.

Optimal function and architectural requirements are met here

No door frame should obstruct the passage and disturb the feeling of openness. For this reason, they installed pivoting doors which close absolutely flush with the wall. There is no gap whatsoever.



DICTAMAT 50

THE CLOSING SYSTEM FOR SMALL AND MEDIUM-SIZED SLIDING DOORS

The modular and flexible closing system without electricity, at adjustable closing speed.



For a wide variety of rail systems – also for retrofitting



Adjustable closing speed as required



Closing forces up to 100 N



For travel up to 4 m



Currentless, sustainable solution

MODELS & CHARACTERISTICS

DICTAMAT 50 BK



- The transmission of the closing force as well as the continuous control of the closing speed are effected via a revolving steel cable
- Ideal for high traffic doors with multiple users
- Due to its modular design, it is perfect for tight spaces
- Available in ready-to-use sets or with individually arranged components
- Also for double-leaf sliding doors with synchronized door leaves

OPERATING PRINCIPLE



DICTAMAT 50 KP



DICTAMAT 50 KW



- All components are pre-assembled in a compact, easy-to-install set on a mounting plate or mounting bracket
- For areas with instructed users, as manual intervention during closing may make the cable slack
- Available in two models: KP (with mounting plate, for mounting below the rail) and KW (with mounting bracket, for mounting above the rail)



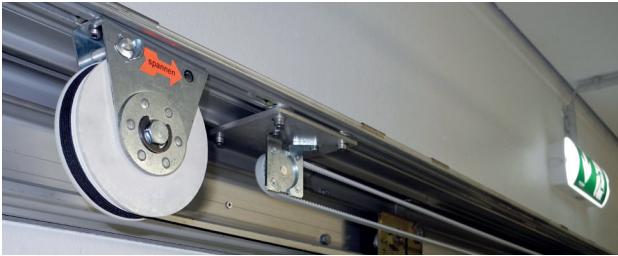
You can find more information on our door closers for sliding doors at www.dictator.com > Door closing solutions > Door closers for sliding doors



Video



APPLICATION EXAMPLES: DICTAMAT 50

**SLIDING DOOR CLOSER AS INEXPENSIVE ALTERNATIVE TO SLIDING DOOR OPERATOR**

The sliding door closer DICTAMAT 50 always closes the access doors to this bakery immediately and reliably—and without electricity

For hygiene reasons, the access doors to the bakery cannot remain open. In the past, fully automatic sliding door operators were used, but their service life came to an end and spare parts were no longer available. A complete refurbishing would have been very expensive, not to mention the high electricity and maintenance costs.

An eco-friendly and reliable alternative

They specifically looked for a door closer without electricity and they found what they were looking for at DICTATOR. The sliding door closer DICTAMAT 50 BK is extremely flexible due to its modular principle, and can be adapted to the existing conditions on site easily. The entire rail and door construction could therefore remain unchanged.

APPLICATION AREAS



Plant construction and soundproof enclosures



Hospitals



Cruise ships & yachts



Server rooms and cold aisle containments

BACK CHECKS

PREVENTS UNCONTROLLED OPENING OF HINGED DOORS & WINDOWS

Reduces excessive opening speed and limits the opening angle. This protects the door/window and its hardware.



For doors that are thrown open by wind, drafts or careless use.



Slow opening doors down and control the motion while opening



Limit the opening angle & keep doors from hitting anything without tripping hazards



Prevent damage to the door, the hinges and the walls



Protect passers-by from risk of injury due to doors that open too fast

CHARACTERISTICS

- Many models available for a wide variety of door situations
- Also suitable for windows, even for tilt and turn windows
- Models with preset or adjustable damping force
- Models available in different lengths and with different damping forces
- Optionally with hold-open in open position
- Cylinders lacquered in RAL colors as well as in stainless steel
- Several fixing accessories for different installation situations - also in combination with overhead door closers
- We will be happy to calculate the right model and fixing points for your application

MODELS

- **TB:** non-adjustable models
- **TBR:** with adjustable damping force (custom solution for special requirements)
- By reducing the oil quantity in the TB, it is possible to adjust the opening angle at which the damping begins
- Depending on door weight, opening angle and installation situation, there are different models available in two diameter ranges:
 - TB: 10-23 mm & 14-28 mm
 - TBR: 10-28 mm & 14-35 mm



TB without hold-open



TB with hold-open



TBR without hold-open



TBR with hold-open

Standard color



RAL 9006
White aluminum

Preferred colors



RAL 7040
Window
gray



RAL 7016
Anthracite
gray



RAL 9005
Jet black



RAL 9007
Gray
aluminum



RAL 9016
Traffic white

(Other RAL colors available on request)



You can find more information on our back checks at
www.dictator.com > Door closing solutions > Back checks

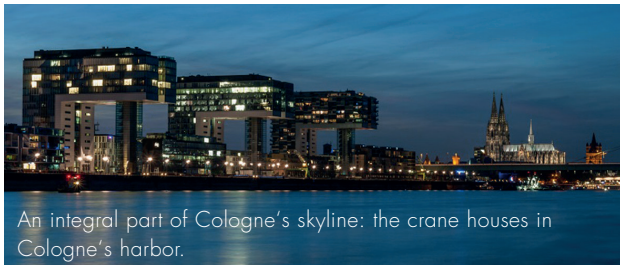


Video



APPLICATION EXAMPLES: BACK CHECKS

BACK CHECK PROTECTS EXCLUSIVE STORE IN KRANHAUS NORD, COLOGNE



Wind turned the large glass entrance door into a danger for passers-by, the facade of the building and the door itself.

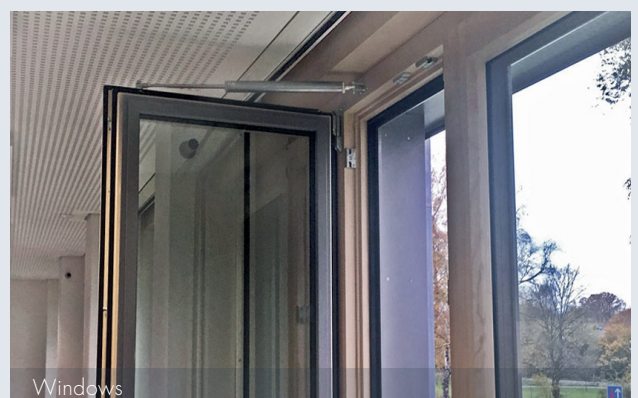
The ground floor of the Kranhaus Nord houses many exclusive shops. One of these shops has a large glass entrance door, which repeatedly slammed open violently due to the frequent strong winds here. The consequences: damages to the door, the door closer and the facade. And it was only a matter of time before the door possibly injured someone passing by.

The solution to this problem was quite simple:

The door was retrofitted with a back check. The installation position was calculated by DICTATOR exactly for this application to achieve perfect function together with the existing overhead door closer. As soon as the door moves too fast, e.g. if there's wind, the back check intervenes and ensures a damped opening movement of the door. Uncontrolled slamming is thus finally a thing of the past.



APPLICATION AREAS



DOOR HOLDERS

HOLD THE DOOR OPEN IN THE DESIRED POSITION

Hold doors in any position—with compact size despite stroke lengths up to 200 mm.





Very solid and robust construction



Very long stroke lengths up to 200 mm



Comfortable operation with the foot



Ideal for outdoor use



Firm hold even on very smooth or uneven floors

CHARACTERISTICS

- Elegant design paired with a robust construction
- Stroke length between 25 – 200 mm
- Available in the following colors: silver, black, white
- Made of non-rusting materials: perfect for outdoor use or in humid environments
- Firm hold even on very smooth or uneven floors, as a built-in spring presses the foot firmly against the floor
- Easy to use: can be fixed or released just by stepping on it

MODELS



DOOR STOP AND BUFFER

Holds the door open in a determined position



- Stops the door gently
- Prevents the door from swinging open beyond the set opening angle
- Holds the door in the open position
- Thanks to its aluminum housing, it can be used outdoors without any problems

- **Standard line:** Robust and low-cost versions with stroke lengths from 25 mm to 105 mm
- **Serie Design Line:** Extremely compact design even with long stroke lengths from 80 mm to 200 mm, in which the piston rod is not visible when retracted



APPLICATION EXAMPLES: DOOR HOLDERS



THE DOOR HOLDER ZE WITH VERY LONG STROKE BUT VERY SHORT HEIGHT HOLD MAINTENANCE DOORS OPEN SECURELY

The large maintenance doors of this production plant for feminine hygiene articles are held open safely with the door holder ZE 160, because it bridges the large distance between the bottom edge of the door and the floor without any problems. Conventional door holders could not be used because of the large distance between the bottom edge of the door and the floor.

Door holder ZE bridges large height differences

Thanks to a proprietary technology, the overall height of the housing is extremely low. Despite the very large stroke of 160 mm, the overall height with the piston rod retracted is just 274 mm!

APPLICATION AREAS



Garden sheds



Patio doors



Entrance doors - open



Entrance doors - closed

HAWGOOD SWING DOOR HINGES

MOVE SWING DOORS FAST AND WITH CONTROL



They ensure safe and controlled closing for large and small swing doors. After swinging briefly, the door closes immediately, which keeps the noise level to a minimum.



Low noise level -
Doors close quickly after
swinging briefly



Large clearance width



Available with hold-open at approx.
90° in both directions

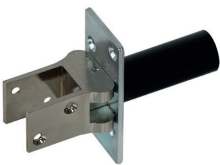


Quality products -
made in the Netherlands
at DICTATOR Productie

CHARACTERISTICS

- For use on the small counter flaps as well as on large, high-traffic doors, swing doors in trucks or machines
- The three models cover a wide range of door sizes and weights
- Models with hold-open available, so that swing doors can also be kept open temporarily with ease
- Available in a variety of materials and colors
- Stainless steel versions available
- High quality standards from Dutch manufacturing ensure perfect function and long service life

MODELS



HAWGOOD 4000/4500

- Shoe of different materials available
- Hold-open at approx. 90°
- For doors from 19 to 30 mm thick and door weights up to 26 kg



HAWGOOD 40 K/41 K

- Shoe made of special abrasion resistant plastic
- Hold-open at approx. 90°
- For doors from 35 to 40 mm thick and door weights up to 50 kg



HAWGOOD Typ 41 /42

- Shoe made of stainless steel
- Optionally with hold-open at approx. 90°
- For doors 40 mm thick and up to 60 kg in weight (higher weights also possible upon request)



You can find more information on our swing door hinges at
www.dictator.com > Door closing solutions > Swing door hinges



Video



APPLICATION EXAMPLES: SWING DOOR HINGES



SWING DOOR HINGES THE HOSPITALITY INDUSTRY: PERFECT FOR HEAVILY USED DOORS

Working in the food service industry can be more than stressful at busy times with serving customers both behind the counter and at the tables. On the one hand, the area behind the counter needs to be clearly defined, but at the same time, employees need to be able to quickly exit and re-enter the counter area without wasting time. Swing doors are perfect for this.

Unique to DICTATOR: the hold-open feature at 90°

When deliveries arrive or, for example, a cart has to be brought into the area behind the counter, it is annoying if the swing door constantly closes again. DICTATOR swing door hinges can therefore be supplied with a hold-open at approx. 90° (in both directions).

APPLICATION AREAS



Shop-fitting



Hotel lobbies



Bars & restaurants



Truck doors

DICTATOR PRODUCTION SITES

THIS IS WHERE OUR DOOR CLOSING SOLUTIONS ARE PRODUCED



All DICTATOR production facilities are located in Western Europe



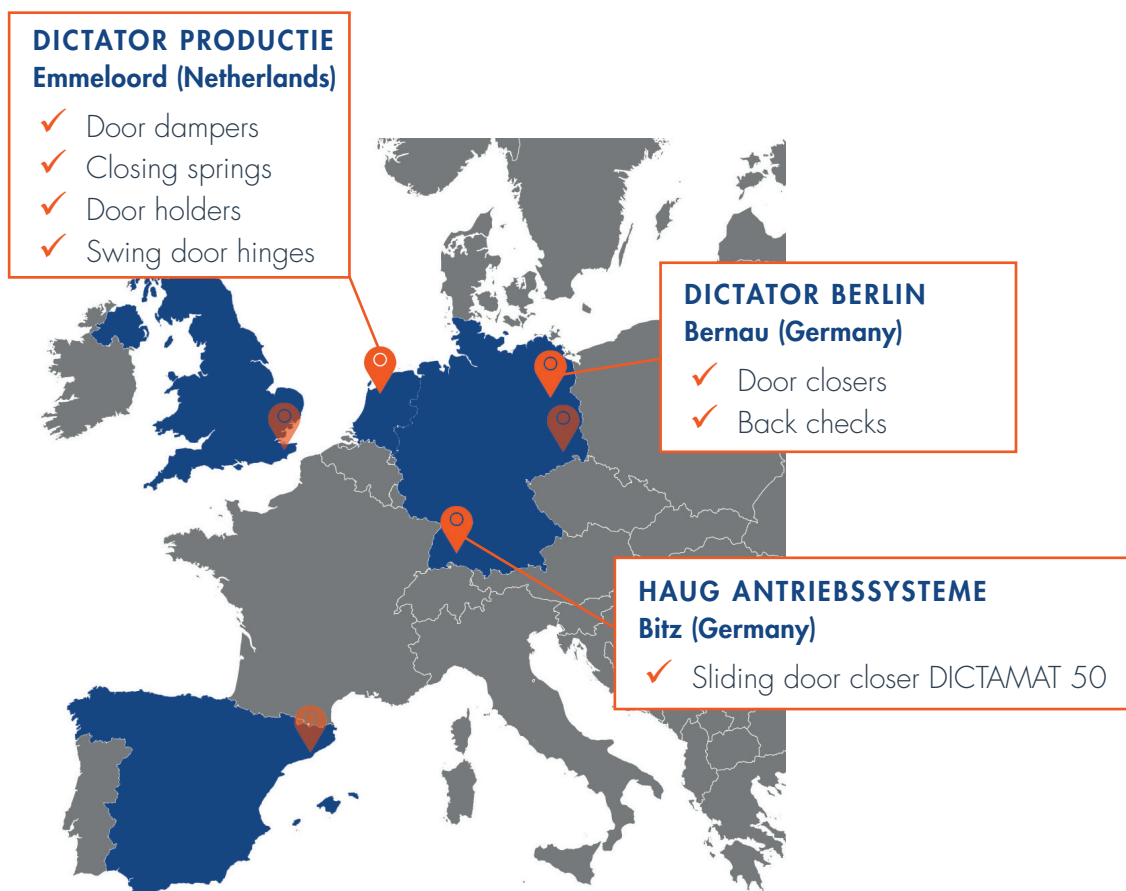
Modern technology & many years of expertise guarantee the highest quality standards



Each location specializes in certain areas of our product range



Individual custom solutions for customer specifications possible



DICTATOR SERVICE: YOUR ALL-ROUND CAREFREE PACKAGE

We don't believe in thinking inside the box. On the contrary, we like to allow our imagination to run wild at times in order to come up with innovative ideas based on well-founded know-how, experience and clearly structured processes.

What drives us? We want to offer our customers the perfect solution for their particular requirements - regardless of whether it's „just“ a single product or large-scale projects.



Individual advice

A key service always included with our products



Many years of experience

in developing solutions for doors and gates



Custom solutions are our "standard"

Individual & complex system solutions, no matter whether for small or large projects



As partner by your side

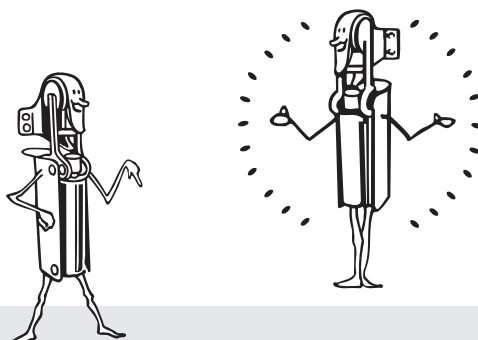
We support you from initial planning to post-purchase

THE NAME "DICTATOR"

We are often asked how we came up with the, admittedly somewhat unusual, name DICTATOR. The name has its roots in the invention of our first product:

A German and a Dutchman invented a "hydraulic shock absorber and door closer" in 1930. This special type of door closer dampens the door shortly before it closes, quietly pulls it shut and keeps it closed.

Its inventors called this product 'dictator', because it dictates the door how to close.



DICTATOR – The Driving Force in Motion Control

ABOUT DICTATOR

DICTATOR is a worldwide group with its main focus of operation in Europe. The headquarters is located in Neusäß near Augsburg. Our products are manufactured in our own production facilities in Europe. This ensures the highest quality and allows us to provide custom solutions for every customer requirement at short notice.

OUR HEADQUARTERS

DICTATOR Technik GmbH
Gutenbergstraße 9
86356 Neusäß
Germany

PRODUCT RANGE

- Lifts & Lift Equipment
- Door Closing Solutions
- Hydraulic Dampers
- Door & Gate Operators
- Fire Door Operators
- Fire Door Control Solutions
- Gas Springs
- Door Interlock Systems



info@dictator.de



+49 (0)821-24 67 30



www.dictator.com