

Power Packs

The DICTATOR power packs change an input voltage of 230 VAC into an electronically stabilised direct voltage of 24 VDC. This direct voltage is independent of the oscillations from the mains voltage. A green light just above the label indicates whether the power pack is working properly.

An integrated protective system protects the power pack in the event of a short circuit on the low-tension side.

DICTATOR power packs are available with two different capacities: 450 mA or 800 mA.

They have been tested and are **approved by the building authorities** for the use in hold-open systems. The power packs are **among others** included in the following approvals: Z-6.5-1903, Z-6.5-1707.

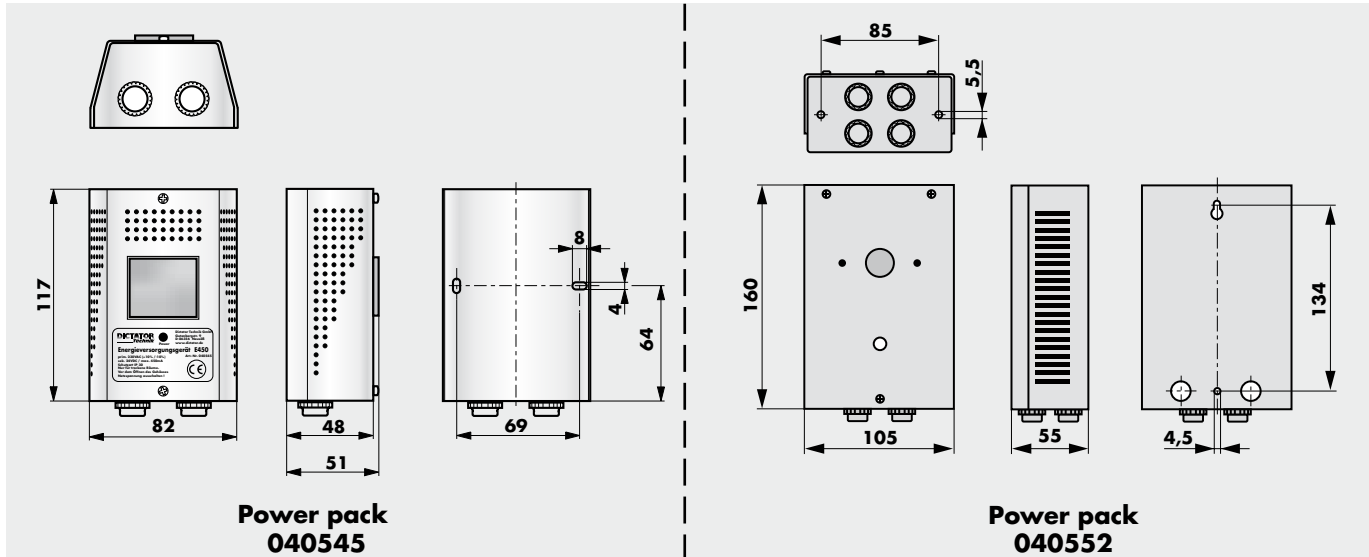
The production quality of the power packs is surveyed by an accredited testing institute.



Technical Data

	040545	040552
Input voltage	230 VAC (+10 %, -10 %) / 50 Hz	
Power consumption max.	0.1 A	0.2 A
Output voltage	24 VDC (+10 %, -10 %)	
Output current max.	450 mA	800 mA
Operating temperature	-10° to +40 °C	
Weight	0.75 kg	1.2 kg
IP rating (according to DIN 40050)	IP 30	IP 20
	Only for dry rooms!	
Protection class	I	
Casing	stainless steel	white varnished sheet steel

Dimensions



Installation

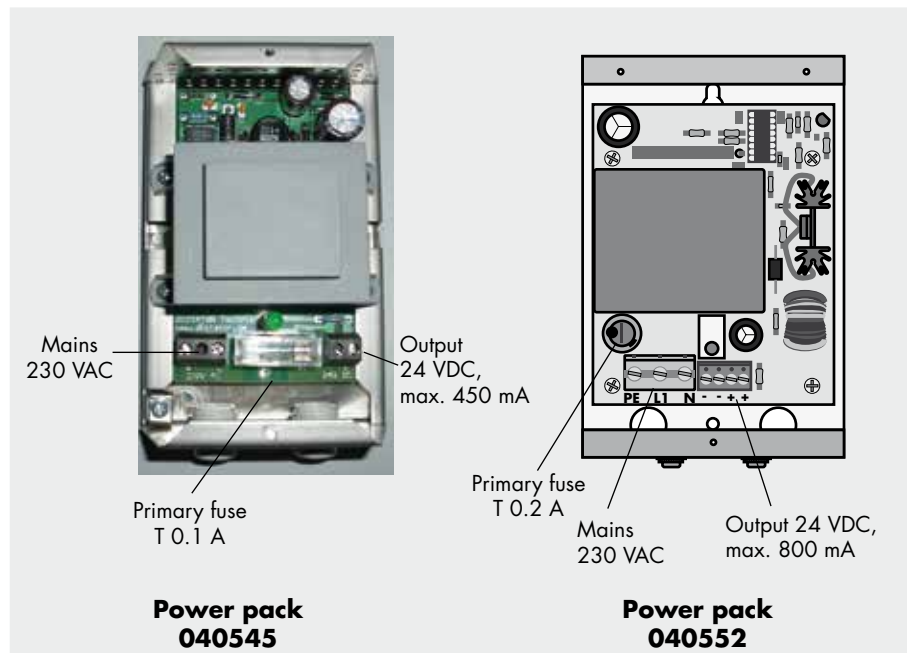
The power packs are only suitable for dry rooms.

During service the power pack heats up. Therefore take care that air can penetrate the casing through the ventilation slots (e.g. do not mount the pack in a corner).

The connection to the 230 V mains and the commissioning and maintenance must be carried out by an accredited person.

Interior

Make sure the earthed conductor is connected properly. Otherwise danger to life by electric shock!



Order Information

Power pack 24 VDC/450 mA

part no. 040545

Power pack 24 VDC/800 mA

part no. 040552