

DICTAMAT 500

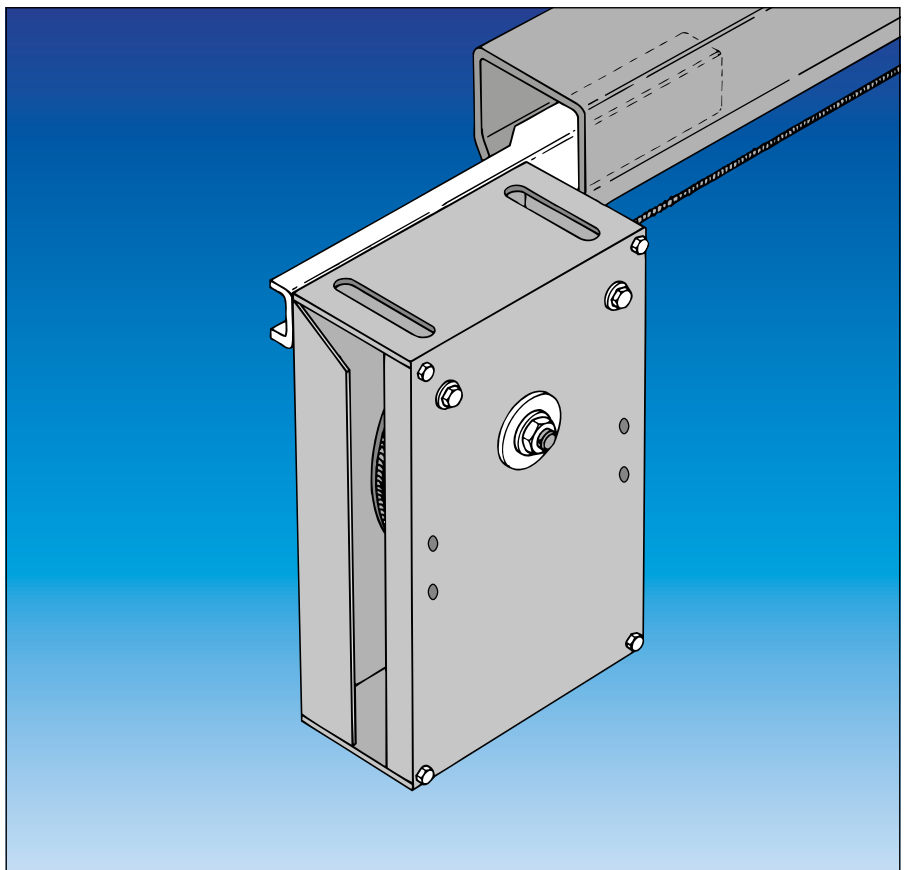
Closing System for Fire Protection Sliding Doors in Hazardous Areas with Closing Speed Control

The **DICTAMAT 500** door operator closes fire protection sliding doors up to 6.5 m door width with the integrated spring. It can also be used in hazardous areas (max. closing force in this case 160 N), as the door is held in the opened position by a separate magnet.

The DICTAMAT 500 is a **compact unit** of both closing spring and radial damper. This facilitates the installation.

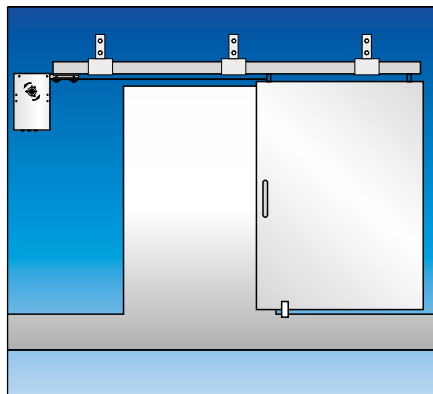
The steel rope of the DICTAMAT 500 is fixed directly to the closing edge of the door. When opening the door the spring is tensioned. As soon as the door is released or the magnet in the opened position is switched off (e.g. by a smoke detector) the **spring closes the door**. The **adjustable closing speed** is controlled by the integrated radial damper.

The DICTAMAT 500 has been tested by the National Material Testing Office in Dortmund, Germany (MPA-NRW).



Selection Criteria

- Suitable for sliding doors of max. 6.5 m door width
- Closing force 160 N
320 N (not for hazardous areas)
- For doors of max. 400 kg: 160 N / 800 kg: 320 N (not hazard. areas)
- Closing by integrated spring, manual opening
- Adjustable closing speed between 0.08 - 0.2 m/s
- Weight with 160 N spring: 16 kg
with 320 N spring: 22 kg

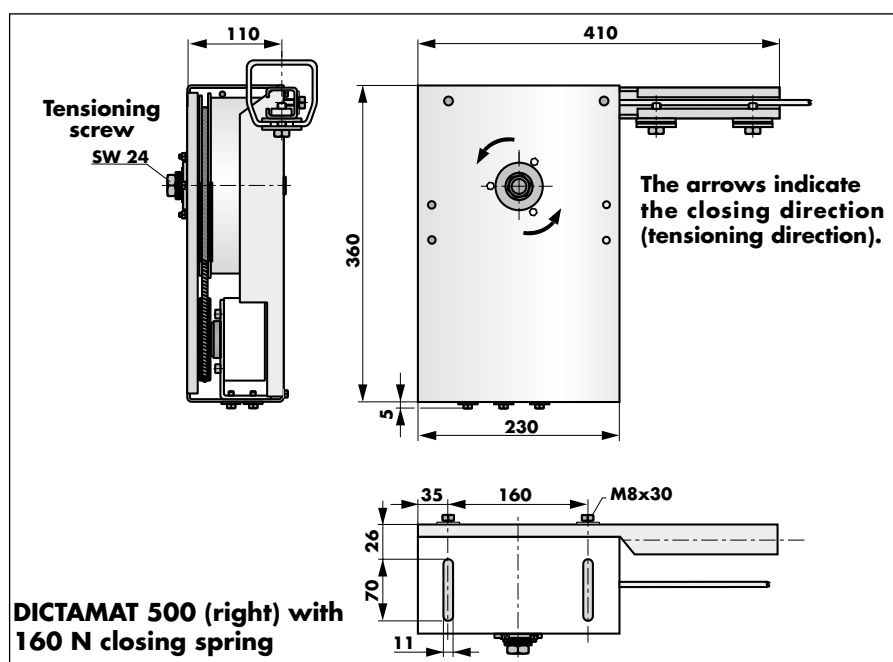
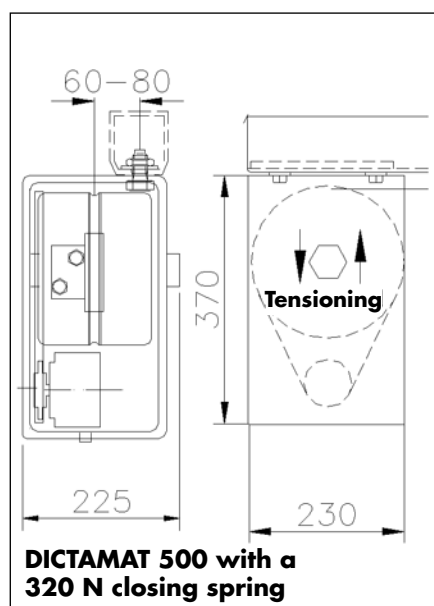


Dimensions, Order Information

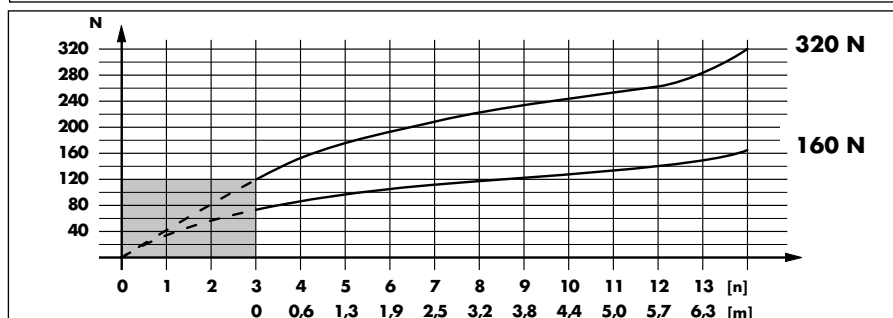
The DICTAMAT 500 is always mounted at that end of the rail where the door is in the closed position. The 160 N type is normally fixed with its bracket for plug-in mounting laterally at the end of the rail. Please make sure sufficient space is available (min. 430 mm). If this space is not available, the DICTAMAT 500 with 160 N is mounted as the 320 N type directly below the rail, using a counter plate. The following drawing shows the drive unit mounted on the left end of the rail.

The closing speed is adjusted directly at the radial damper integrated in the DICTAMAT 500.
Important: The force acting on an obstacle may **not exceed 150 N**.

Dimensions



Force of the Closing Spring



Components Included

Operator (with integrated closing spring and radial damper), rope \varnothing 3 mm (10 or 25 m)

Bracket for plug-in mounting in rail and threaded counter plate

Order Information

| | |
|---------------------------------------|-----------------|
| DICTAMAT 500, 160 N, 10 m rope, left | part no. 700040 |
| DICTAMAT 500, 160 N, 10 m rope, right | part no. 700041 |
| DICTAMAT 500, 320 N, 10 m rope, left | part no. 700042 |
| DICTAMAT 500, 320 N, 10 m rope, right | part no. 700043 |
| DICTAMAT 500, 160 N, 25 m rope, left | part no. 700044 |
| DICTAMAT 500, 160 N, 25 m rope, right | part no. 700045 |
| DICTAMAT 500, 320 N, 25 m rope, left | part no. 700046 |
| DICTAMAT 500, 320 N, 25 m rope, right | part no. 700047 |