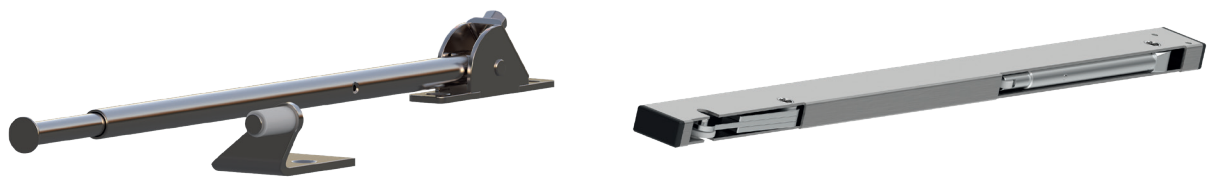


DOOR SEQUENCE SELECTORS





Essential for the correct and safe closing of double-leaf hinged fire and smoke doors. Ensures that both door leaves close in the correct order.

Two different models:

- the affordable SR 90 model with telescopic arm
- the aesthetically appealing SR 2000 model which discreetly sits below the door frame

TABLE OF CONTENTS - DOOR SEQUENCE SELECTORS

	Page
 Door sequence selector SR 90 07.05.04 Double-leaf doors closed in the correct order	
 Door sequence selector SR 2000 07.05.05 The unobtrusive door sequence selector	

Subject to technical changes. No claim for compensation in case of errors.

Door sequence selector SR 90

Double-leaf doors closed in the correct order

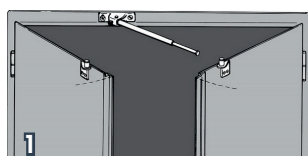


Website

CHARACTERISTICS

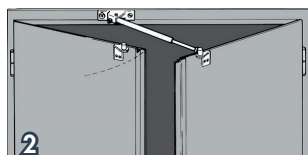
- It is mandatory to equip double-leaf hinged fire and smoke doors with a door sequence selector
- They ensure that the door leaves close in the right order and thus reliably prevent the spreading of fire or smoke
- Affordable model with lever arm and two support brackets which are mounted as counterparts for the door sequence selector on the door leaves
- Tested and approved according to DIN EN 1158 for its use on double-leaf fire doors.

FUNCTIONING

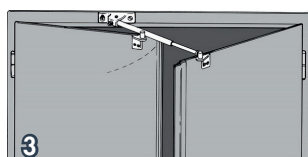


The SR 90 door sequence selector remains unfolded when only the finally locking leaf is opened. Every time both door leaves are opened, the telescopic arm

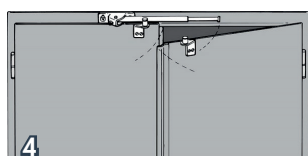
of the SR 90 door sequence selector is automatically set in an upright position by the integrated spring.



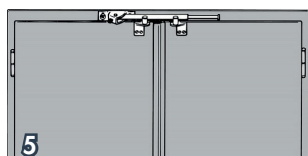
The SR 90 door sequence selector now controls the correct closing sequence of both door leaves: The door leaf to close finally (locking door leaf) hits the cushioned arm of the door sequence selector with the pin of the support bracket mounted on the door leaf and is kept in this position...



... until the latching leaf with support bracket moves laterally across the arm of the door sequence selector and...



... during closing takes the telescopic arm back with it to the closed position. When the arm lies flat against the frame, the locking leaf is released and...



... can now close.

ORDER INFORMATION

Description	Part no.
SR 90 door sequence controller, with 2 support brackets and screws, packed in plastic bag, LE 02001	500420P

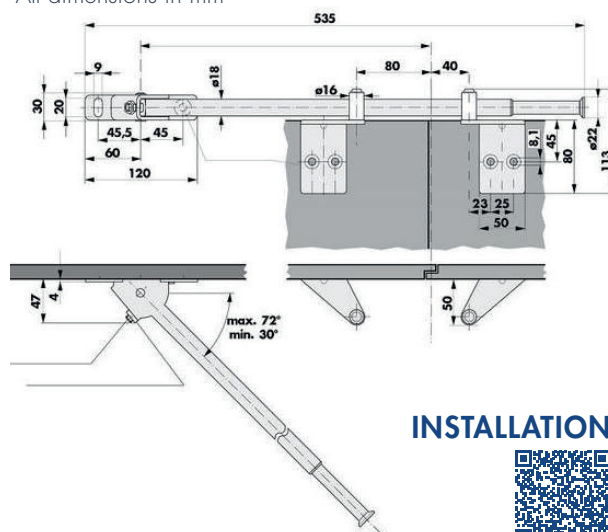


TECHNICAL DATA

Surface	zinc-plated steel
Weight of door leaf	max. 200 kg per door leaf
Width of door leaf	up to 1.60 m per door leaf
Space required above the door	minimum 30 mm
Righting angle	30° to 70°

DIMENSIONS

All dimensions in mm



INSTALLATION



Installation instructions

Door sequence selector SR 2000

The unobtrusive door sequence selector



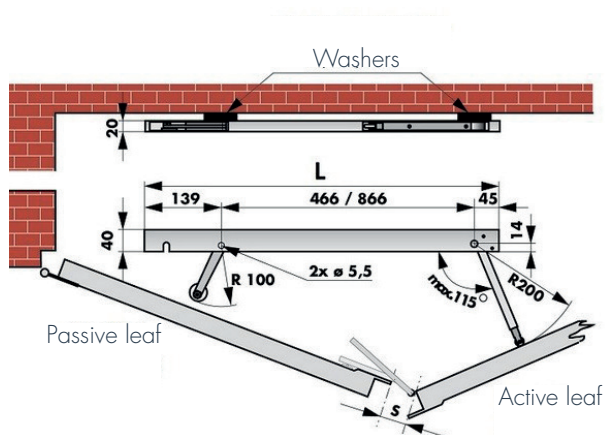
Website

CHARACTERISTICS

- Especially designed for double-leaf fire doors which should meet high aesthetic requirements
- Can be mounted discreetly below the door frame behind the door leaves
- No need for separate support brackets on the door leaves
- Tested and approved according to DIN EN 1158 for their use on double-leaf hinged fire doors

DIMENSIONS

All dimensions in mm



TECHNICAL DATA

Surface	zinc-plated steel
Weight	max. 160 kg per door leaf
Door leaf width	0.75 m to 1.50 m per door leaf
Space required below the frame	20 mm
Righting angle	max. 115°

INSTALLATION



Installation instructions

ORDER INFORMATION

Description	Part no.
SR 2000 L door sequence selector, length 1050 mm, LE 02005	500430
SR 2000 K door sequence selector, length 650 mm, LE 02004	500435