

Swing door hinges HAWGOOD 40K and 41K

For doors up to 50 kg and 35/40 mm thick



Website

CHARACTERISTICS

- Equipped with a hold-open at approx. 90°
- The abrasion-resistant special plastic of the swing door hinge ensures a long operational life even under heavy use
- The plastic shoes are shaped in such a way that their contours can be easily recessed in the door using standard frasers
- There special bushes (patented bolts) included, which allow a safe and stable fastening, even on doors with hollow profiles

MODELS

- **Door thickness:** Available with two different inner dimensions of the shoe, for door thicknesses of 35 mm / 40 mm
- **Spring forces:** Types 40K and 41K differ in their spring forces (recognizable by the plastic sleeve of the spring pin: Type 40K grey, Type 41K black).
- **Surfaces:** stainless steel model is particularly suitable for use in damp environments or outdoors

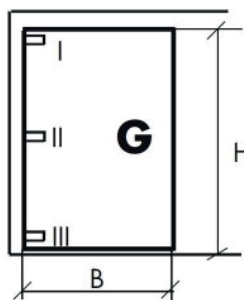


SELECTION CRITERIA

Determining the required swing door hinges depends on the size and weight of the door



Questionnaire



$$K = \frac{G \times 1/2 B}{H}$$

Legend:

- K: factor for choosing the type
- G: weight of the door in kg
- H: height of the door in mm
- B: width of the door in mm

1. Calculate K factor using the formula.
2. Depending on the calculated factor K, look up which type should be installed on top and which at the bottom of the door using this table.
3. In case the calculation of factor K doesn't result in a suitable combination of swing door hinges, check if you could use another HAWGOOD model or contact our technical customer service.

K	I	III	G (kg)
< 4	1 x 40K	1 x 40K	< 20
4 - 6	1 x 41K	1 x 40K	20 - 30
6 - 10	1 x 41K	1 x 41K	30 - 50

TECHNICAL DATA

Door thickness	35 mm; 40 mm
Door weight	max. 50 kg
Door height	max. 2000 mm
Door width	max. 1000 mm
Opening angle	max. 100°
Hold-open	at about 90°
Material	Plastic (shoe), zinc-plated steel (plate); Plastic (shoe), stainless steel AISI 304 (plate)

INSTALLATION

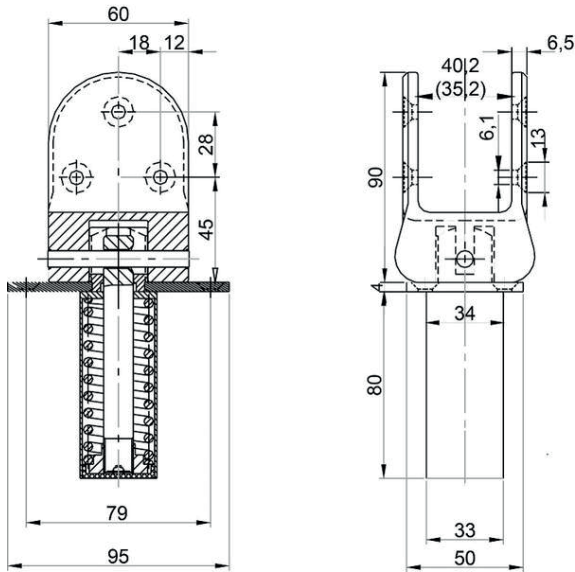


Installation instructions

DIMENSIONS

All dimensions in mm

(The inner dimension of the shoe in brackets applies to model for 35 mm-thick doors)



ORDER INFORMATION

Description	Part no.
HAWGOOD swing door hinge 40K, light grey plastic, with hold-open	301400
HAWGOOD swing door hinge 40K, black plastic, with hold-open	301401
HAWGOOD swing door hinge 40K, light grey plastic, with hold-open, plate stainless steel	301400V2A
HAWGOOD swing door hinge 40K, black plastic, with hold-open, plate stainless steel	301401V2A
HAWGOOD swing door hinge 40K, plate zinc-plated, shoe light grey plastics, with hold-open, inner dimension of the shoe 35 mm	VAR-301400-001
HAWGOOD swing door hinge 40K, plate zinc-plated, shoe black plastic, with hold-open, inner dimension of the shoe 35 mm	VAR-301401-001
HAWGOOD swing door hinge 41K, light grey plastic, with hold-open	301410
HAWGOOD swing door hinge 41K, black plastic, with hold-open	301411
HAWGOOD swing door hinge 41K, light grey plastic, with hold-open, plate stainless steel	301410V2A
HAWGOOD swing door hinge 41K, black plastic, with hold-open, plate stainless steel	301411V2A
HAWGOOD swing door hinge 41K, plate zinc-plated, shoe light grey plastic, with hold-open, inner dimension of the shoe 35 mm	VAR-301410-001
HAWGOOD swing door hinge 41K, plate zinc-plated, shoe black plastic, with hold-open, inner dimension of the shoe 35 mm	VAR-301411-001