

Accessories for back checks

Installation accessories for back checks



DICTATOR offers a wide range of installation accessories for back checks for almost every application. On our website you will find the most common application situations illustrated with the appropriate accessories.

We will be happy to advise you on selecting the right model and accessories, including fixing points. Please feel free to contact us.



TABLE OF CONTENTS

■ Accessories for back checks with ø 8 mm eyelets

Most back checks (series TB 10-23, TB 14-28 and TBP 10-29 as well as some versions of the TBR 14-35 series) have eyes with a diameter of 8 mm. The following accessories are available for these models.

■ Accessories especially for doors with overhead door closers

The back checks can easily be used in conjunction with overhead door closers. Depending on the installation situation, special fixing accessories may be required.

■ Accessories for back checks with ø 10 mm eyelets

In the TBR 14-35 series, there are back checks with ø 10 mm eyes that are used in extreme situations. There are also special fixing accessories for these versions.

ACCESSORIES

All dimensions in mm

Accessories for back checks with Ø 8 mm eyelet

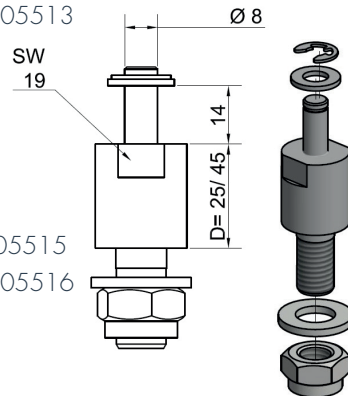
Mounting pin TB Ø 8 mm

Distance D = 25 mm

- Zinc-plated: part no. 205511
- AISI 304: part no. 205512
- AISI 316 : part no. 205513

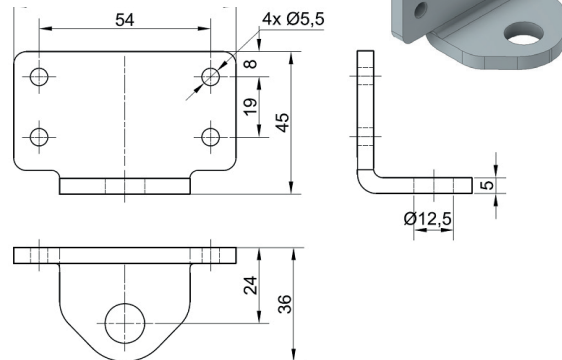
Distance D = 45 mm

- Zinc-plated: part no. 205514
- AISI 304: part no. 205515
- AISI 316 : part no. 205516



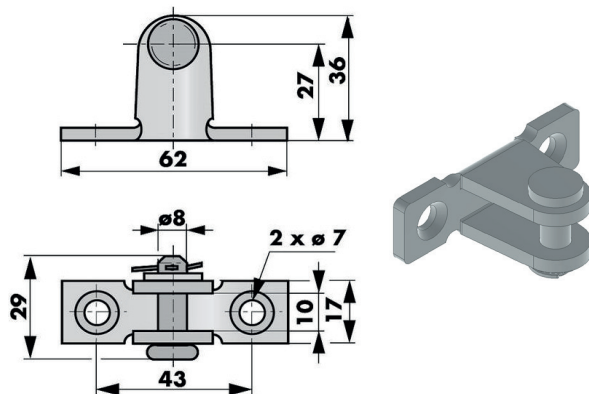
Bracket TB 70x45x36 mm (without mounting pin)

- Zinc-plated: part no. 205489
- AISI 304: part no. 205490
- AISI 316 : part no. 205491



Mounting bracket (part of sets 1, 2 & 3)

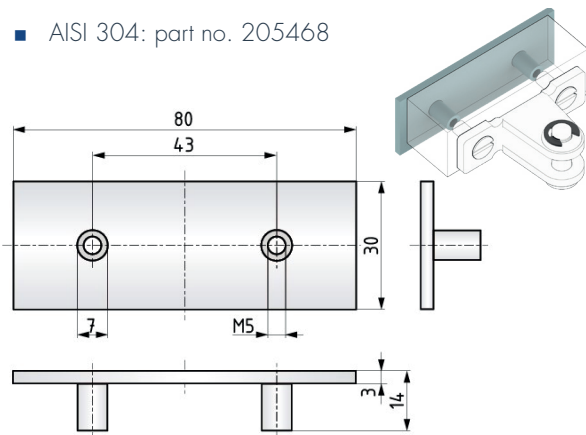
- Zinc-plated: part no. 205197
- AISI 304: part no. 205249
- AISI 316: part no. 205455



Counter plate to bracket no. 205197

The counter plate is used when fixing the mounting bracket on thin-walled steel doors.

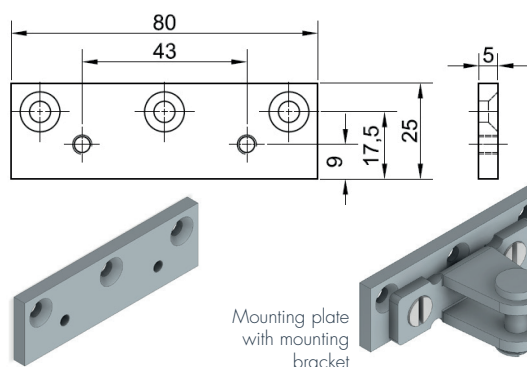
- AISI 304: part no. 205468



Mounting plate TB 80x25 mm, 2 threaded holes M5

The mounting plate is intended for fixing the mounting bracket no. 205197 on e.g. glass doors with an aluminium frame

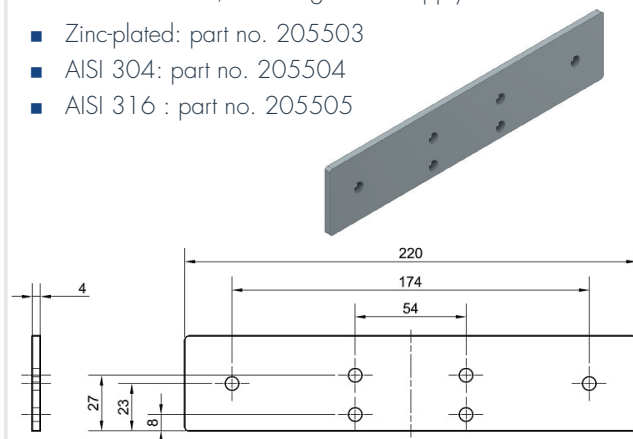
- AISI 304: part no. 205479



Mounting plate TB 220x46 mm

The mounting plate is used together with the mounting bracket TB 70x45x36 mm, when high forces apply.

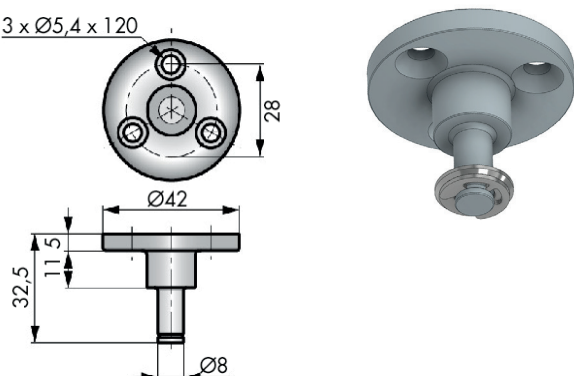
- Zinc-plated: part no. 205503
- AISI 304: part no. 205504
- AISI 316 : part no. 205505



Mounting flange TB Ø 42 mm, mounting pin Ø 8 mm
(part of set 2)

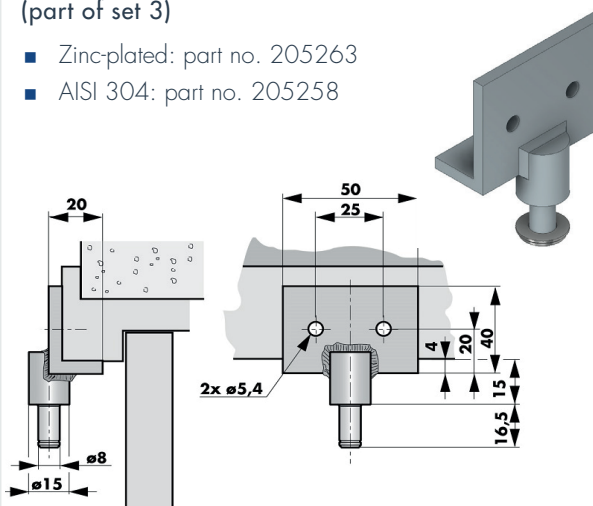
- Zinc-plated: part no. 205261
- AISI 304: part no. 205281

3 x Ø5,4 x 120



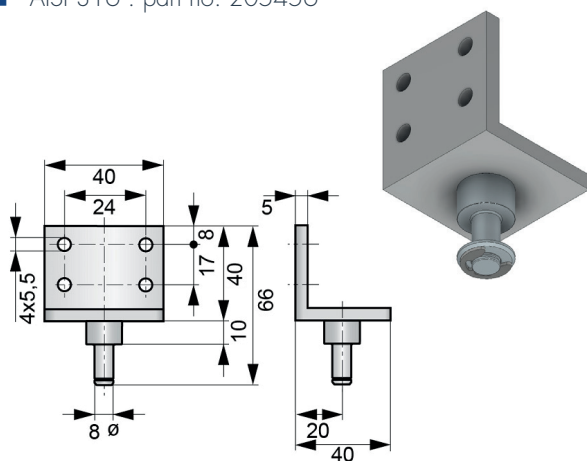
Bracket TB 50x40x20 mm, mounting pin Ø 8 mm
(part of set 3)

- Zinc-plated: part no. 205263
- AISI 304: part no. 205258



Bracket TB 40x40x40 mm, mounting pin Ø 8 mm

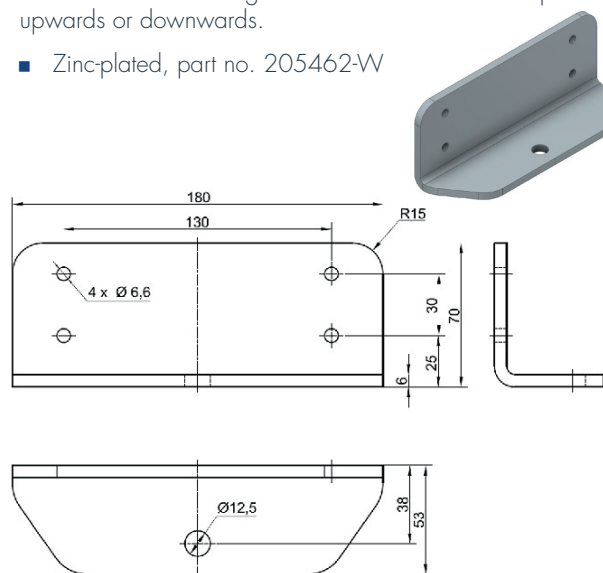
- Zinc-plated: part no. 205262
- AISI 304 : part no. 205282
- AISI 316 : part no. 205456



Bracket TB 180x70x53 mm (without mounting pin)

The bolt of the mounting bracket can be fitted either pointing upwards or downwards.

- Zinc-plated, part no. 205462-W

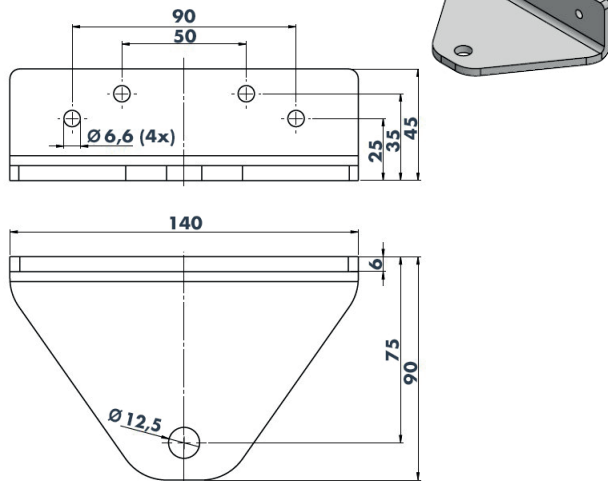


Accessories specially for doors with overhead door closer

The door opening limiter can also be used in conjunction with an overhead door closer without any problems. Depending on the installation situation special fixing accessories are required.

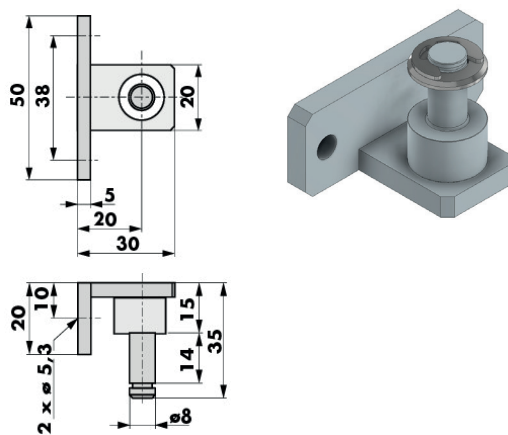
Bracket TB-OTS 140x45x90 mm (without mounting pin)

- Zinc-plated: part no. 205492



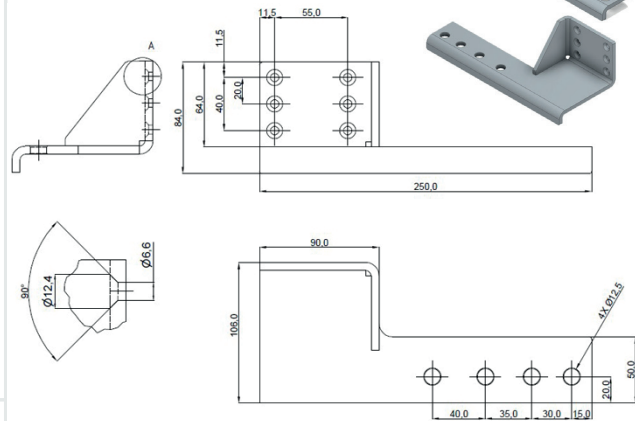
Bracket TB-OTS 50x20x30 mm, mounting pin Ø 8 mm

- Zinc-plated: part no. 205276



Bracket TB-OTS 250x106x90x84 mm (without mounting pin)

- Zinc-plated: part no. 205507 (DIN left)
- Zinc-plated: part no. 205508 (DIN right)



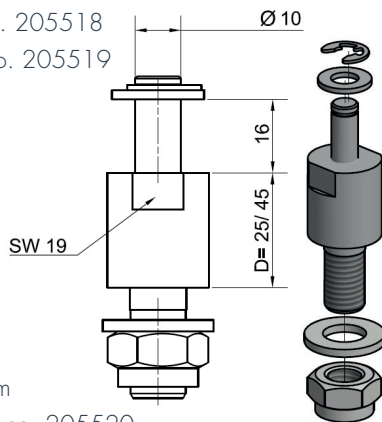
When selecting this bracket, please note that the specified DIN direction applies to installation on push side.

Accessories for back checks with Ø 10 mm eyelet

Mounting pin TB Ø 10 mm

Distance D = 25 mm

- Zinc-plated: part no. 205517
- AISI 304: part no. 205518
- AISI 316 : part no. 205519



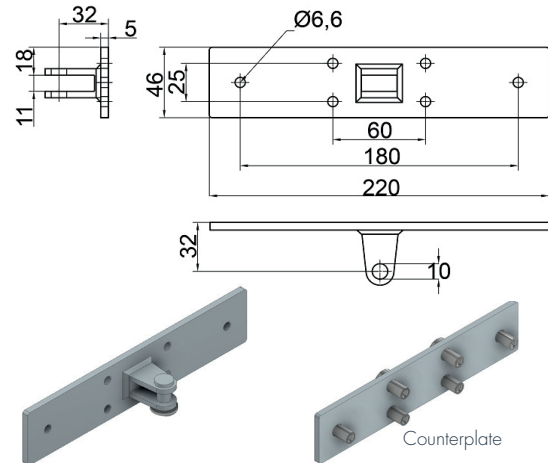
Distance D = 45 mm

- Zinc-plated: part no. 205520
- AISI 304: part no. 205521
- AISI 316 : part no. 205522

Mounting Plate TB 45x220 mm

The counter plate, part no. 205461, has the same dimensions and features 6 threaded inserts M6.

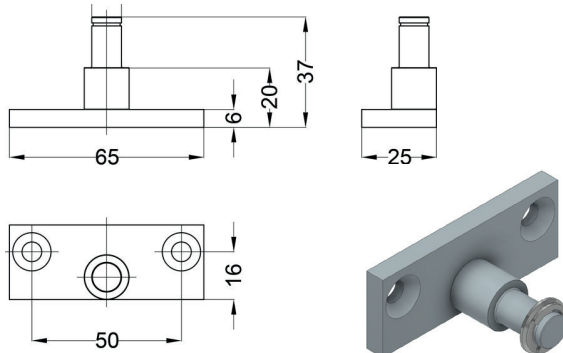
- Zinc-plated: part no. 205460



Mounting flange TB 65x25 mm, mounting pin Ø10 mm

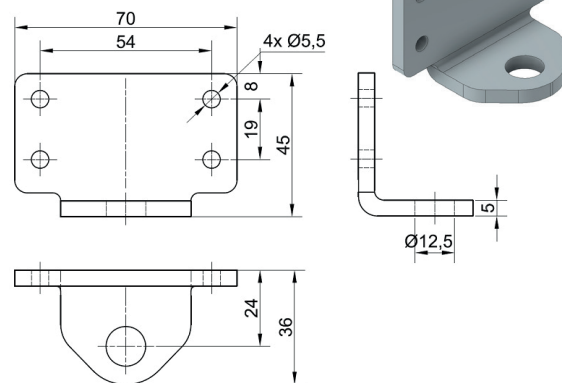
The mounting flange is intended for narrow door frames. The holes have Ø 6 mm with a countersink for ISO 7721 countersunk head screws.

- Zinc-plated: part no. 205469



Bracket TB 70x45x36 mm (without mounting pin)

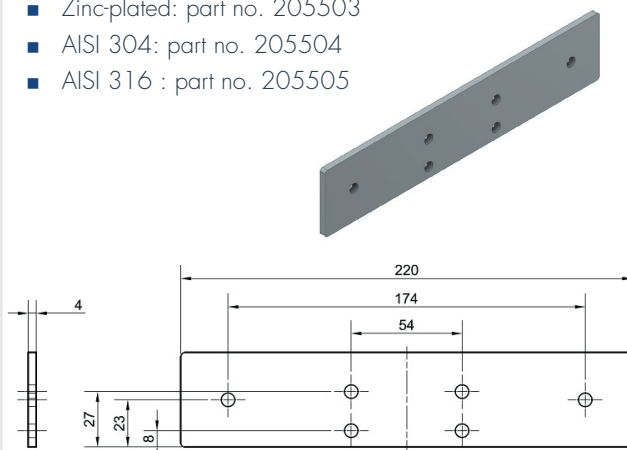
- Zinc-plated: part no. 205489
- AISI 304: part no. 205490
- AISI 316 : part no. 205491



Mounting plate TB 220x46 mm

The mounting plate is used together with the mounting bracket TB 70x45x36 mm, when high forces apply.

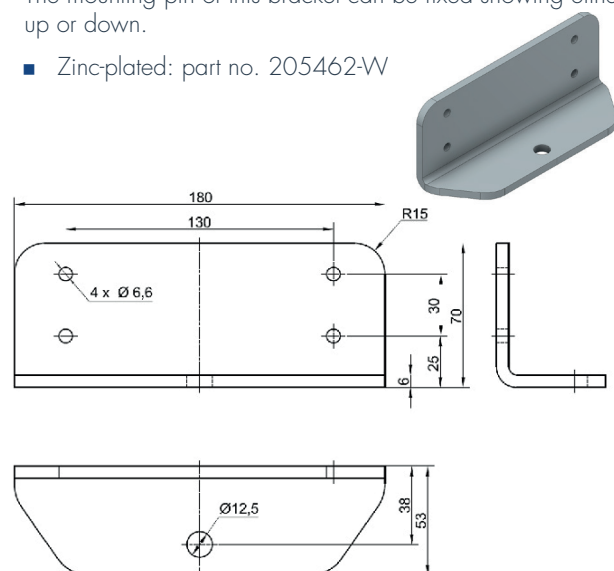
- Zinc-plated: part no. 205503
- AISI 304: part no. 205504
- AISI 316 : part no. 205505



Bracket TB 180x70x53 mm (without mounting pin)

The mounting pin of this bracket can be fixed showing either up or down.

- Zinc-plated: part no. 205462-W



ORDER INFORMATION

| Model | Part no. | | |
|--|-------------|----------|----------|
| | zinc-plated | AISI 304 | AISI 316 |
| Mounting bracket | 205197 | 205249 | 205455 |
| Counter plate with threaded inserts for mounting bracket 205197 | - | 205468 | - |
| Mounting plate TB with 2 threaded holes M5 for mounting bracket 205197 | - | 205479 | - |
| Mounting flange TB Ø 42, pin Ø 8 mm | 205261 | 205281 | - |
| Mounting bracket TB 40x40x40 mm, pin Ø 8 mm | 205262 | 205282 | 205456 |
| Mounting bracket TB 50x40x20 mm, pin Ø 8 mm | 205263 | 205258 | - |
| Mounting bracket TB 70x45x36 mm, for mounting pin Ø 8 or 10 mm | 205489 | 205490 | 205491 |
| Mounting bracket TB 180x70x53 mm, for mounting pin Ø 8 or 10 mm | 205462-W | - | - |
| Mounting plate TB 220x46 mm | 205503 | 205504 | 205505 |
| Mounting pin TB 25-14 mm, Ø 8 mm | 205511 | 205512 | 205513 |
| Mounting pin TB 45-14 mm, Ø 8 mm | 205514 | 205515 | 205516 |
| Mounting pin TB 25-16 mm, Ø 10 mm | 205517 | 205518 | 205519 |
| Mounting pin TB 45-16 mm, Ø 10 mm | 205520 | 205521 | 205522 |
| Mounting plate TB 45x220 mm, seat with pin Ø 10 mm | 205460 | - | - |
| Counter plate for mounting plate TB 45x220 mm, with threaded inserts | 205461 | - | - |
| Mounting flange TB 65x25 mm, pin Ø 10 mm | 205469 | - | - |
| Mounting bracket TB-OTS 50x20x30 mm, pin Ø 8 mm | 205276 | - | - |
| Mounting bracket TB-OTS 140 x 45 x 90 mm, for pin 8 or 10 mm | 205492 | - | - |
| Mounting bracket TB-OTS 250x106x90x84 mm, for pin Ø 8 or 10 mm, DIN left, mounted on non swing side | 205507 | - | - |
| Mounting bracket TB-OTS 250x106x90x84 mm, for pin Ø 8 or 10 mm, DIN right, mounted on non-swing side | 205508 | - | - |