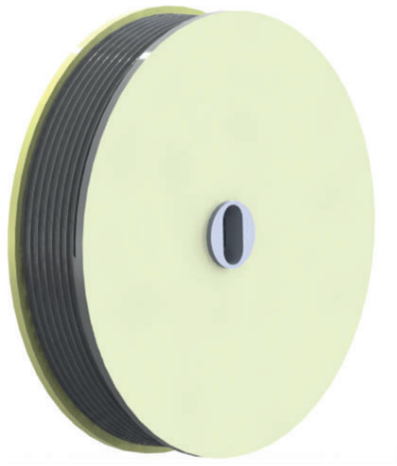



SPRING ROPE PULLEYS



In case of landing doors driven by the car door, the EN 81-1/2 prescribes that it has to be made sure the landing doors close on their own.

Here the DICTATOR spring rope pulleys represent the ideal solution.

TABLE OF CONTENTS - SPRING ROPE PULLEY

	Page
 Spring rope pulley for sliding lift doors 01.08.04 The ideal closing device to meet the EN 81, point 7.7.3.2	

Subject to technical changes. No claim for compensation in case of errors.

Spring rope pulleys for sliding lift doors

The ideal closing device to meet the EN 81, point 7.7.3.2



Website

DESCRIPTION

According to EN 81-1/2 point 7.7.3.2, all landing doors driven by the car door have to be equipped with an additional mechanical closing device. This has to ensure the automatic closing of the landing door when it is open, for whatever reason, and the car is outside the unlocking zone.

An ideal solution to this problem represent the new models of the DICTATOR spring rope pulley with plastic casing. Due to guide grooves for the plastic cable injected in the casing and an optimized bearing of the spring in the casing, they offer a very long operational life and an optimum functioning. Using a plastic casing and a plastic cable also minimizes noise emission.



MODELS

- **Spring rope pulley with hub for fixing with an 8 mm square bolt** (to be procured by the customer) or a screw with square neck (DIN 603) (by customers). For this model we supply a mounting bracket (part no. 070113), see dimensioned drawing further down.
- **Spring rope pulley with sliding hub:** this prevents the possible damaging of the spring during tensioning or releasing. The spring rope pulley with sliding hub always comes together with a bracket (zinc-plated or AISI 304). Mounting on the wall or ceiling becomes much more easier when fixing the bracket to the separately available mounting plate with headless pins (part no. 070114).

For an optimum functioning of the spring rope pulley the door has to be as smooth-running that the force of the mounted spring rope pulley is sufficient to move the door from every position. If you are not sure, we recommend you measure the force required to move the door with a spring balance. It is possible to adjust the force of the spring rope pulley by varying its pretension - see the instructions under "Installation".

TECHNICAL DATA

Material	Casing: flame retardant DOMAMID plastics; rope: flame retardant Kevlar rope with polyester coat
Closing force	25 N; 50 N; 80 N
Door type	Sliding doors

INSTALLATION



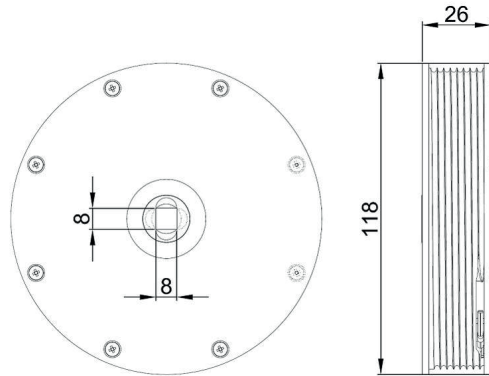
Installation instructions

DIMENSIONS

All dimensions in mm

Spring rope pulley with inner square

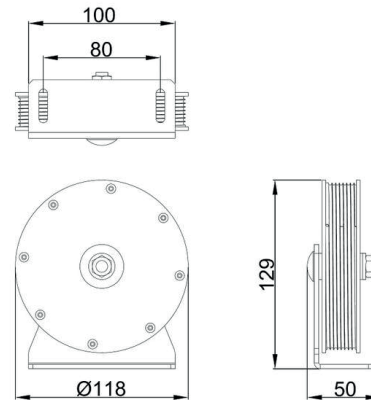
The inner square of the spring rope pulley is end-to-end. It can be fastened with a square bolt provided by the customer or the square of the mounting bracket (part no. 070113).



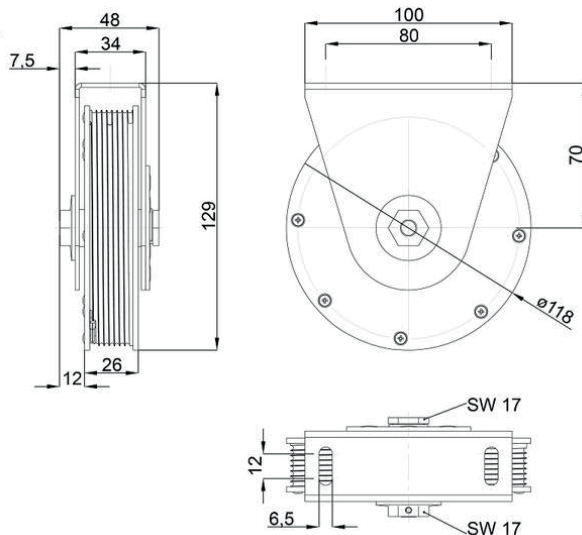
Spring rope pulley with mounting bracket

Part no. 070113

The mounting bracket makes mounting of the spring rope pulley much easier if there is no square bolt provided on site. If required, the mounting bracket has to be ordered in addition to the spring rope pulley.



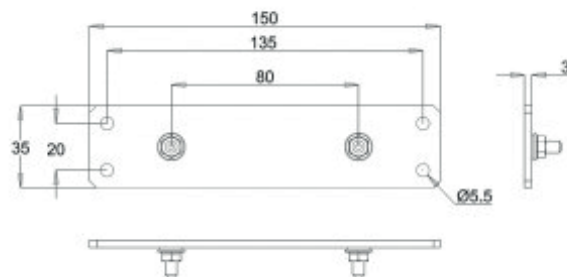
Spring rope pulley with sliding hub & bracket



Mounting plate for spring rope pulley with sliding hub

Part no. 070114

If the spring rope pulley has to be fixed to the wall or ceiling, we recommend to use this mounting plate. You simply have to fit the spring rope pulley to the headless pins of the mounting plate and then screw the mounting plate to the wall/ceiling.



ORDER INFORMATION

Description	Part no.
Spring rope pulley 25 N with 2 m plastic rope, plastic casing with guide grooves, for through square 8 x 8 x 26 mm	070110
Spring rope pulley 50 N with 2 m plastic rope, plastic casing with guide grooves, for through square 8 x 8 x 26 mm	070111
Spring rope pulley 80 N with 2 m plastic rope, plastic casing with guide grooves, for through square 8 x 8 x 26 mm	070112
Spring rope pulley 25 N with 2 m plastic rope, plastic casing with guide grooves, with sliding hub, bracket zinc-plated	070102
Spring rope pulley 50 N with 2 m plastic rope, plastic casing with guide grooves, with sliding hub, bracket zinc-plated	070093
Spring rope pulley 80 N with 2 m plastic rope, plastic casing with guide grooves, with sliding hub, bracket zinc-plated	070094
Spring rope pulley 25 N with 2 m plastic rope, plastic casing with guide grooves, with sliding hub, bracket AISI 304	070103
Spring rope pulley 50 N with 2 m plastic rope, plastic casing with guide grooves, with sliding hub, bracket AISI 304	070098
Spring rope pulley 80 N with 2 m plastic rope, plastic casing with guide grooves, with sliding hub, bracket AISI 304	070099

ACCESSORIES

Description	Part no.
Mounting bracket for spring rope pulley with through square, zinc-plated, with cup square screw and washers	070113
Mounting plate for spring rope pulleys with sliding hub (25/50/80 N), zinc-plated, 150 x 35 x 3 mm	070114