

# DICTATOR DHE Lift

Extremely reduced dimensions of pit and headroom

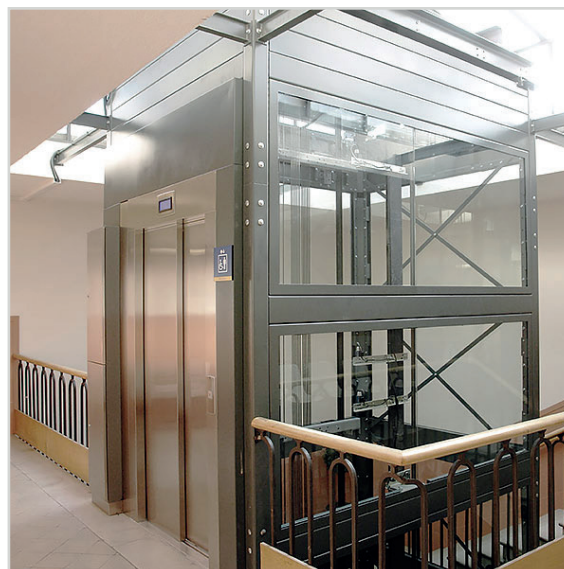


Website

## DESCRIPTION

The accessible layout of buildings is increasingly growing in importance. In many cases, however, the installation or retrofitting of a lift cannot be carried out because the space usually required for the shaft pit and shaft head is not available, or because the dimensions of the shaft make it impossible to use a standard lift.

In addition to the DICTATOR Homelift DHM 500 series, which is manufactured according to the regulations of the Machinery Directive 2006/42/EC, DICTATOR offers for such cases the lift DHE in accordance with Directive 2014/33/EU.



## TECHNICAL DATA

Functioning	hydraulic lift, indirect, rope reeving 2:1			
Nominal load	225 kg; 300 kg; 450 kg; 600 kg			
Travel speed	0,62 m/sec.			
Minimum dimension pit	200 mm			
Min. dimension headroom	2.700 mm			
Travel	20 m			
Size of car	customized fabrication			
Power supply	230/400 VAC, 50 Hz			
Type of doors	telescopic sliding doors; other doors on demand			
Door width	600 - 1000 mm			
Number of stops	depends on travel, min. distance about 900 mm			
Dimensions of the car	custom fabrication, clear height 2078 mm, dimension G (see dimensions) max. 1200 mm			
Number of accesses	one or two (on adjacent or opposite walls)			
Car doors	automatic sliding doors, other doors on demand			
Landing doors	automatic sliding doors, other doors on demand			
Engine room	approved, lockable caret			
Precision of positioning	+/- 5 mm			
Safety gear	instantaneous safety gear, pipe rupture valve			
Control system	down selective collective control with memory function			
Apron	foldable apron with one access, foldable and lifting apron with two accesses			
	<b>DHE 225</b>	<b>DHE 300</b>	<b>DHE 450</b>	<b>DHE 600</b>
Load	225 kg	300 kg	450 kg	600 kg
Minimum area	0,60 m <sup>2</sup>	0,79 m <sup>2</sup>	1,17 m <sup>2</sup>	1,45 m <sup>2</sup>
Maximum area	0,70 m <sup>2</sup>	0,90 m <sup>2</sup>	1,30 m <sup>2</sup>	1,60 m <sup>2</sup>
Motor rating kW	9,6	11,8	11,8	14,7
Number of persons	3	4	6	8

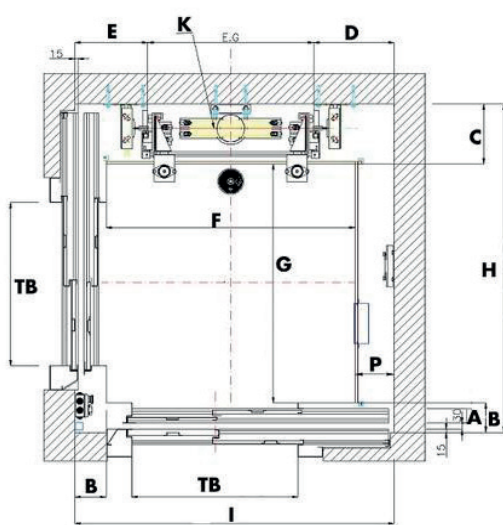
## KEY ADVANTAGES

- Pit 200 mm
- Headroom 2.700 mm
- Cars of all dimensions can have two accesses (either on adjacent or opposite walls)
- Requires very little space
- Customized, tailor-made production, i.e. optimal use of the available space
- No machinery room required (drive unit and control system in approved caret)

If there is no shaft available on site, the modular DICTATOR shaft system is the ideal complement to the DHE elevator. It is suitable for both indoor and outdoor installation.

## DIMENSIONS

### Dimensions of the DHE lift

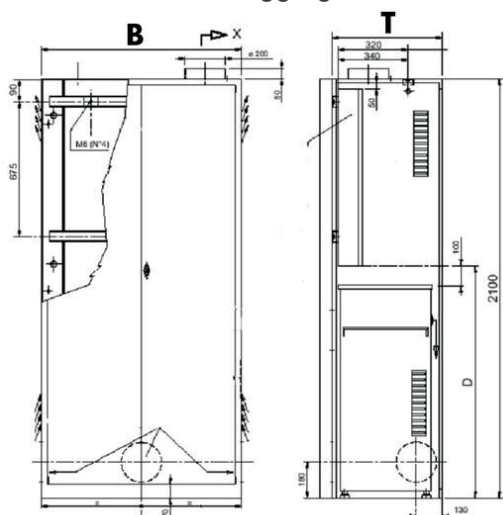


- **F:** Width of the car
- **G:** Depth of the car
- **H/I:** Inner dimensions of the shaft
- **TB:** Door width

The DICTATOR DHE lift is always manufactured according to the customer's specifications, i.e. it is perfectly adapted to the available space. Therefore, there are no charts with standard dimensions. The dimensions are determined, among other things, by the desired load, number and position of access points, and the type and width of doors used. This drawing shows a DHE lift with an access on adjacent walls in a wall shaft. The minimum dimensions for the types DHE 300, DHE 450 and DHE 600 are summarized in the following table. Dimension G may not exceed 1200 mm in any case.

Type	DHE 300	DHE 450	DHE 600
<b>Min. dimension (mm)</b>			
EG	650	800	800
A	75	75	75
B	157	157	157
C	335	335	370
D	140	145	145
E	290	300	300
FxG (m <sup>2</sup> )	0,79	1,17	1,45
H	1400	1550	1550
I	1400	1550	1550
K	320	400	400
P	100	100	100
<b>Max.</b>			
FxG (m <sup>2</sup> )	0,9	1,3	1,6

### Dimensions of DHE aggregate caret



The DICTATOR DHE lift does not require a separate machine room. Instead, hydraulic power unit and control system are housed in an approved caret. There are two different sizes available, depending on the particular model. Dimensions (width x depth x height)

- DHE 225 and DHE 300: 950 x 400 x 2100 mm
- DHE 450 and DHE 600: 1030 x 620 x 2100 mm

Access door double-leaf Painted surface, RAL 7035

## Car finishes

The following car features are available as standard. However, further options are also available upon request.

<b>Walls</b>	Melamine coated wall panels (6 standard colors), Optional: stainless steel or glass Hydraulic side car wall in two parts (removable)
<b>Mirror</b>	Standard: a freely selectable car wall as standard with mirror at half height
<b>Car ceiling</b>	- Stainless steel ceiling with integrated LED spots - Suspended stainless steel louvered ceiling with integrated fluorescent tubes Optional: Other colors and finishes available at an additional cost
<b>Floor</b>	- Non-slip linoleum flooring (anthracite or beige) - Special designs such as aluminum checker plate or preparation for on-site tile flooring at an additional cost
<b>Operating panel</b>	Vertical panel in stainless steel with stainless steel pushbuttons and display (either red or blue)
<b>Handrail</b>	Round handrail - nickel-plated - stainless steel
<b>Decorative elements</b>	Baseboards, door pulls and lintel in stainless steel
<b>Car doors</b>	Double-leaf, telescopic sliding doors in stainless steel, opening to one side Optional: center-opening or triple-leaf telescopic sliding doors
<b>Landing doors</b>	Double-leaf, primed telescopic sliding doors, opening to one side Optional: stainless steel, centrally opening or three-leaf telescopic sliding doors Stainless steel panel with call button and display